



HIDEAWAY SOLUTIONS

www.hideawaysolutions.com
(401) 835-7599

INSTALLATION INSTRUCTIONS for STEP 180 integrated cabinet step units



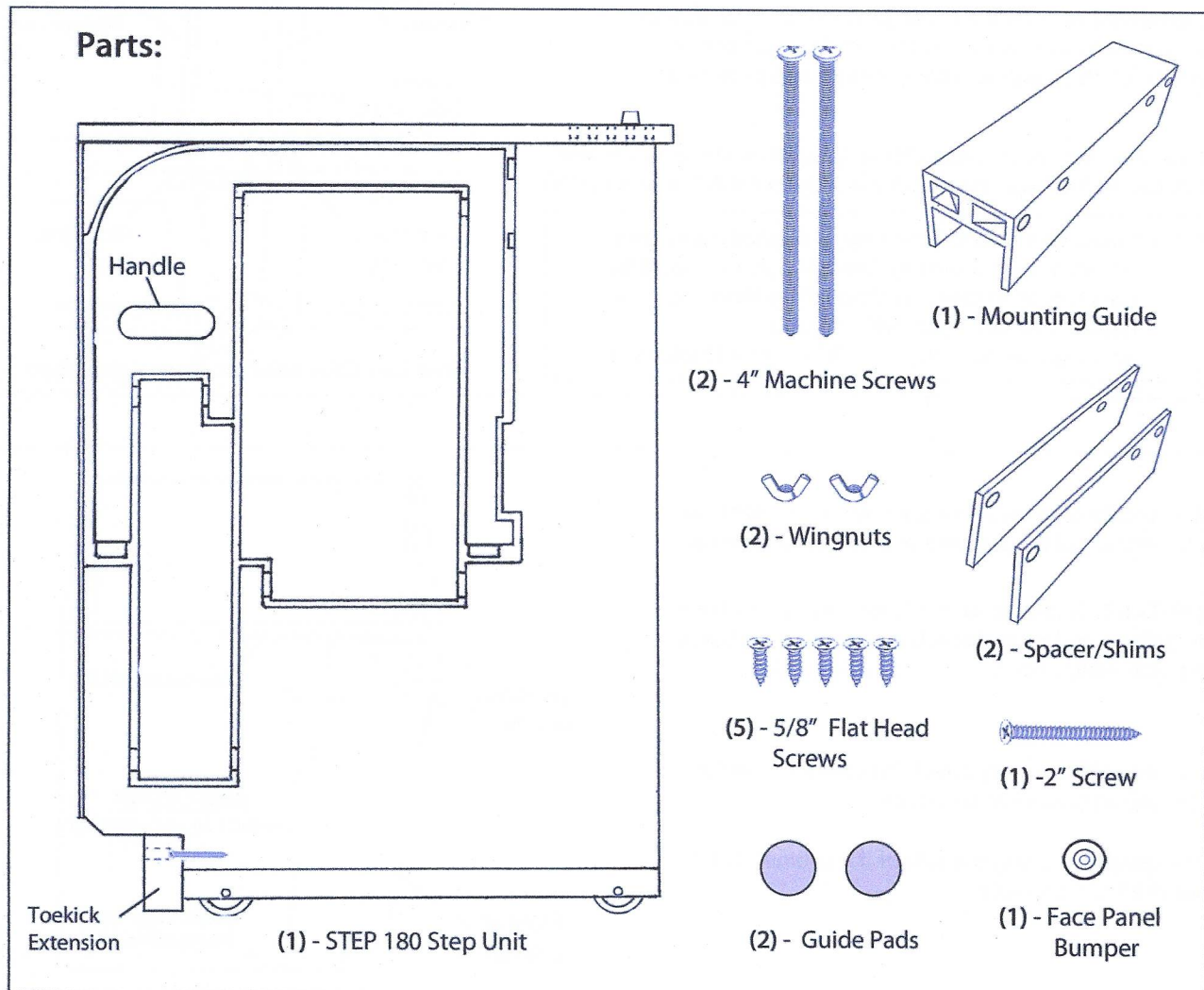
WARNINGS:

- Never use Step Unit as a portable step stool.
- Only use Step Unit when properly installed into the cabinet Mounting Guide.
- Always use designated Handle to operate.
- Keep hands free of pinch zones when operating Step Unit.
- Always check surroundings when lowering Step Unit.
- Always assist children when operating and using Step Unit.

NOTES:

- The following instructions contain information on how to install and use the STEP 180 Step Unit.
- The Step 180 has been designed to be used between a base/appliance cabinet and a 2nd base/appliance cabinet or rigid end panel
- See "Installation Options" for more details and diagrams.
- Save these instructions for future use and reference.
- Improper installation voids the warranty. If you have any problems with your step unit, contact Hideaway Solutions directly.
- Limited Warranty — One Year — details on back page

Parts:



Complete the following installation instructions using:

----- Pencil	Tape Measure	-----
----- Drill	Carpenter Square and/or Level	-----
----- #2 Phillips head bit	Wood Glue	-----
----- Long Drill bit size 3/16"	Nail gun and/or Tape	-----

Guidelines:

- (1) - Step Unit is designed to be attached between 1 base/large appliance cabinet and a 2nd base/large appliance cabinet or end panel.
- (2) - For smooth operation of the Step Unit, finished floor height must be the same height under the cabinets as the rest of the room.
- (3) - Installation instructions assume countertops to be installed after Step Unit installation.

Attaching Mounting guide: Base Cabinet to Base Cabinet/End Panel (for Flush aligned cabinet fronts):

(See Page 5-6 for Installation instructions for cabinet fronts not flush with one another)

Note: For Face Frame constructed cabinets only,
for european style cabinets, continue to step 2

If your cabinets have a Face Frame Overhang (where the Face Frame extends past the cabinet's Exterior Side Panel), an additional Spacer/Shim will be needed. The Spacer/Shim aligns and supports installation of the Mounting Guide. (Two) 3/16" thick plastic Spacer/Shims are provided.

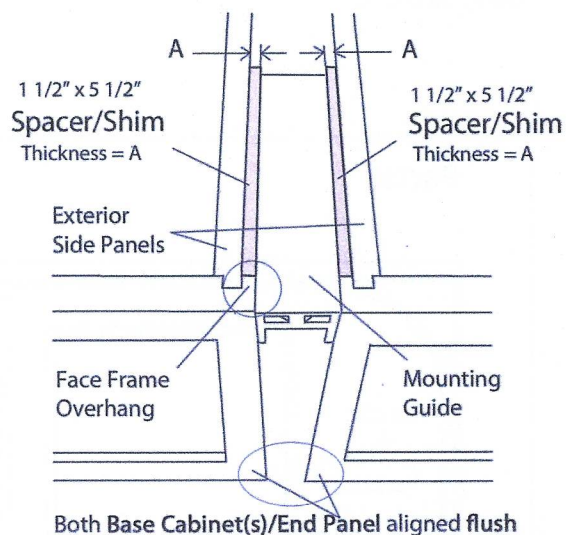
1.

Use the provided Spacer/Shim OR cut Spacer/Shim to recommended size by measuring Face Frame Overhang Thickness A (See box below).

Note: Custom cut Spacer/Shim may be needed depending on Face Frame overhang dimension (A). It should be sized to support the entire side(s) of the Mounting Guide.

Recommended Material: Wood

Recommended Size: 1 1/2" x 5 1/2" x Thickness A



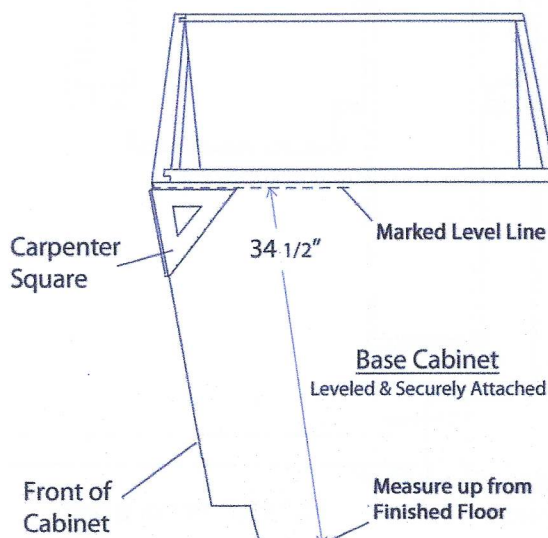
Note: The follow instructions are not dependent on the orientation of the cabinets shown in the diagrams.

Important: Before installing Mounting Guide, make sure cabinets and/or endpanels are securely anchored to the wall and/or floor.

2.

Install, level and securely attach 1st cabinet to which the Mounting Guide will be attached.

Mark a Level Line along the side of the cabinet 34 1/2" above the Finished Floor.



Note: The Mounting Guide has multiple mounting holes for different mounting options.

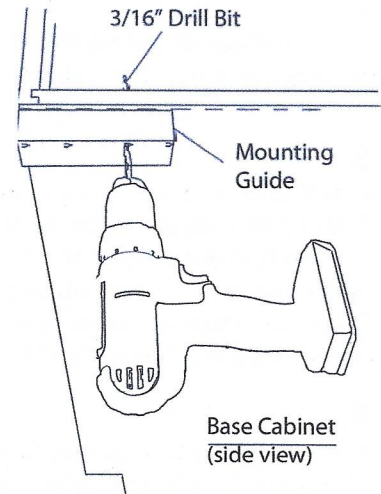
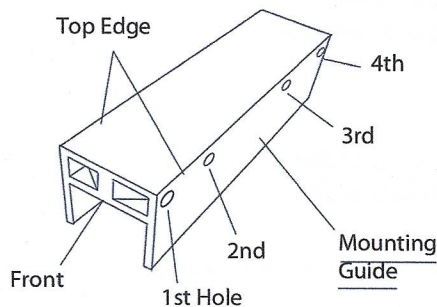
Note: Modification or removal of the cabinet corner bracket or countertop support member may be needed if they are obstructing the mounting guide's hole locations.

3.

Hold the top edge of the Mounting Guide on the marked line and align the front of the Mounting Guide with the front of the cabinet frame.

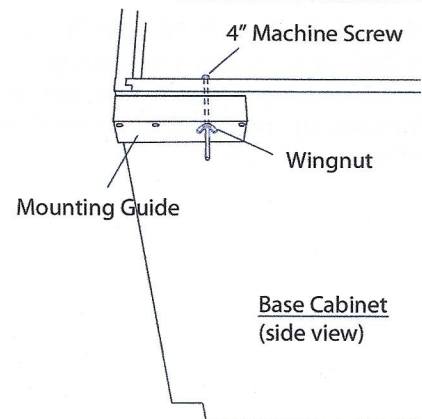
4.

Using a 3/16" bit, insert the drill bit through the 3rd mounting hole on the side of the Mounting Guide. Align the Drill Bit to go through the adjacent hole on the other side of the Mounting Guide, and continue to drill through the side of the cabinet.



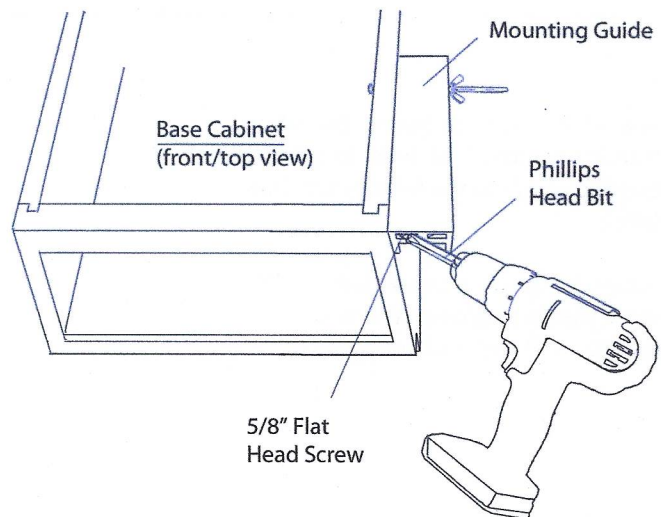
5.

In order to keep the Mounting Guide aligned for the next step, temporarily insert a 4" Machine Screw through both the inside of the Base Cabinet and through the 3rd side holes of the Mounting Guide. Screw Wingnut onto Machine Screw and hand tighten.



6.

While keeping the Top Edge of the Mounting Guide level along the marked line, screw a provided 5/8" Flat Head Screw through the 1st angled hole of the Mounting Guide to secure the front of the Mounting Guide to the cabinet.



7.

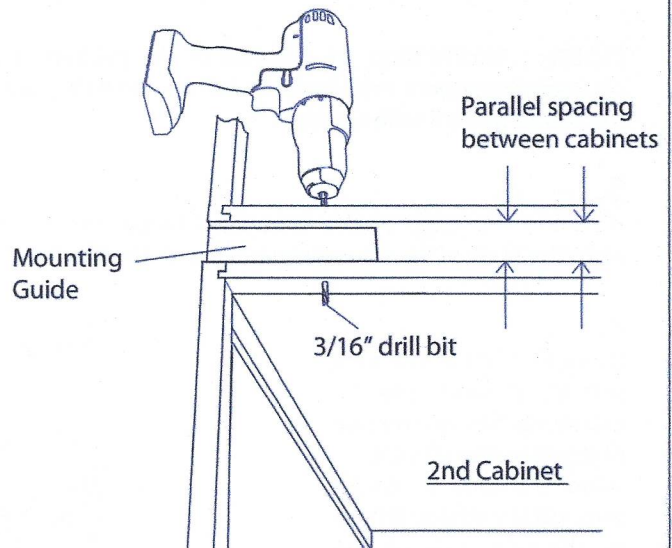
Unscrew Wingnut and remove 4" machine Screw in order to install 2nd cabinet (or end panel).

8.

Install, level, and secure 2nd cabinet/endpanel flush against adjacent side of Mounting Guide, making sure of a consistent 1 1/2" parallel vertical space between the two cabinets face frames. Check for parallel horizontal spacing between the two cabinets face frames as well.

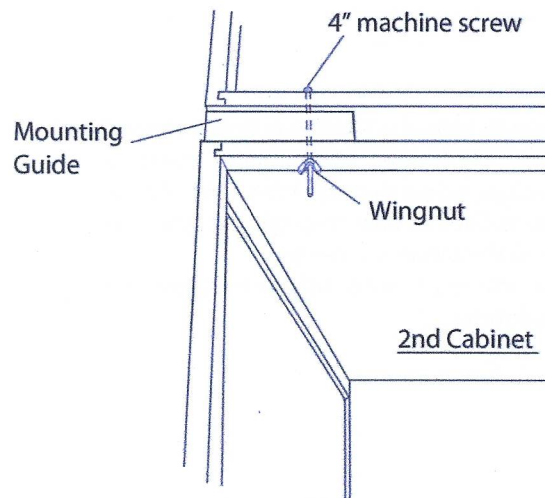
9.

While securing the Mounting Guide re-insert the 3/16" Drill Bit into the same 3rd hole and drill through the 2nd cabinet.



10.

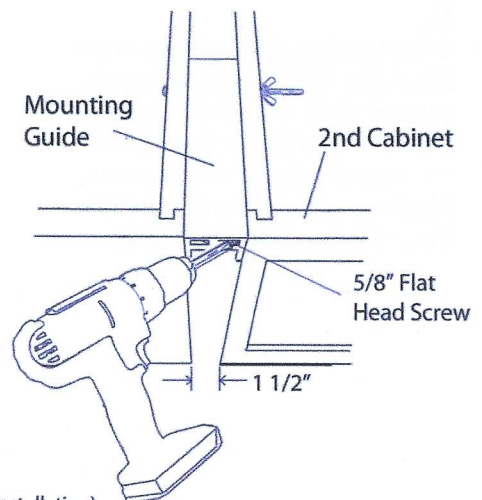
Insert the 4" Machine Screw again through the same 3rd hole, all the way through the 1st cabinet, Mounting Guide and 2nd cabinet. Again, screw and tighten the provided Wingnut onto the 4" long bolt



11.

Screw a 5/8" Flat Head Screw (provided) through the other 1st hole to secure Mounting Guide to the front of the 2nd cabinet.

Double check for a consistent 1 1/2" vertical spacing between the two cabinets or cabinet and endpanel.



Continue to pg. 7 (Installing Guide Pads for Base Cabinet to Base Cabinet/End Panel Installation)

Attaching Mounting guide: Most Large Appliance Cabinet to Base Cabinet/Endpanel

or any 2 cabinet fronts that do not have the same depth from back wall.

Note: The follow instructions are not dependent on the oriantation of the cabinets shown in the diagrams.

Note: If your cabinets have a Face Frame Overhang (where the Face Frame Overhang extends past the cabinet's Exterior Side Panel), an additional Spacer/Shim (not provided) will be needed. The Spacer/Shim aligns and supports installation of the Mounting Guide.

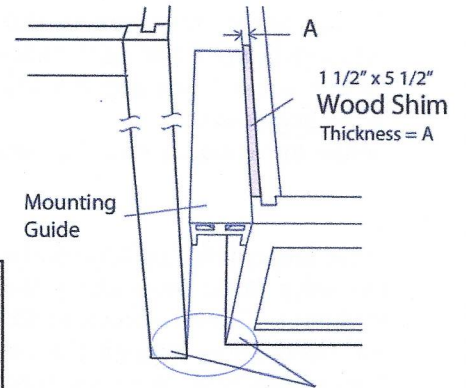
1.

Use the provided Spacer/shim OR cut Spacer/Shim to recommended size by measuring Face Frame Overhang Thickness A (See box below).

Note: Custom cut Spacer/Shim may be needed depending on Face Frame overhang dimension (A). It should be sized to support the entire side(s) of the Mounting Guide.

Recommended Material: Wood

Recommended Size: $1\frac{1}{2}" \times 5\frac{1}{2}" \times \text{Thickness A}$



For when 2 cabinets have different depths

Important: Before installing Mounting Guide, make sure 1st cabinet is securely anchored to the wall and/or floor.

2.

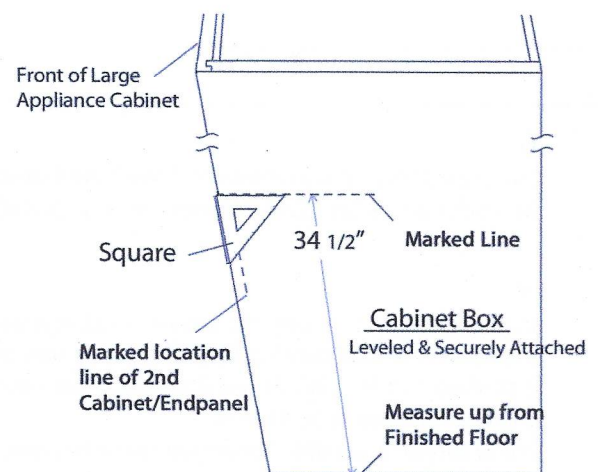
Install, level and securely attach Large Appliance Cabinet to which the Mounting Guide will be attached.

Mark a level horizontal line on the side of the cabinet $34\frac{1}{2}"$ above the Finished Floor.

3.

Initially without the Mounting Guide, place the 2nd Cabinet/Endpanel against the Large Appliance Cabinet to determine and mark a vertical line where the Front Face of the 2nd Cabinet/Endpanel will be on the 1st Cabinet.

This location will mark the alignment of the Mounting Guide. Place the 2nd Cabinet/Endpanel aside for the next step.



Note: The Mounting Guide has multiple mounting holes for different mounting options.

Note: Modification or removal of the cabinet corner bracket or countertop support member may be needed if they are obstructing the mounting guide's hole locations.

4.

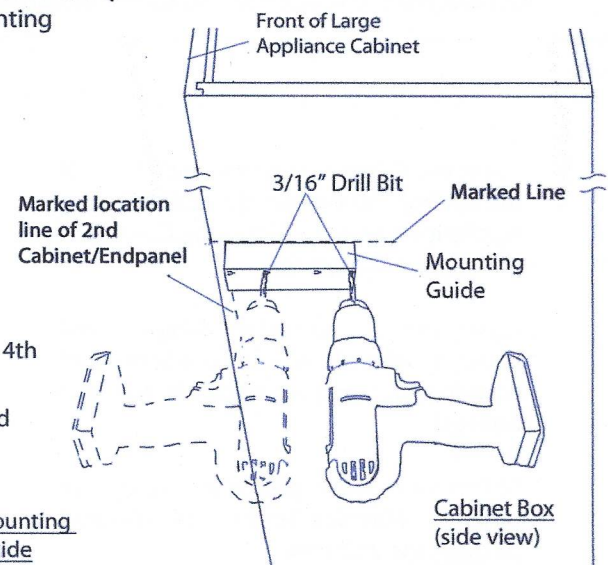
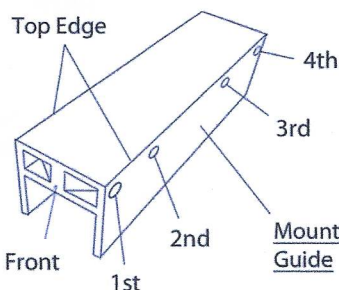
Firmly hold the top edge of the Mounting Guide on the marked horizontal line and the front of the Mounting Guide to the marked vertical line.

5.

Using a $\frac{3}{16}"$ bit, insert the drill bit through the 2nd mounting hole on the side of the Mounting Guide.

Align the Drill Bit to go through the corresponding hole on the other side of the Mounting Guide, and continue to drill through the side of the cabinet.

Repeat procedure through the 4th hole.



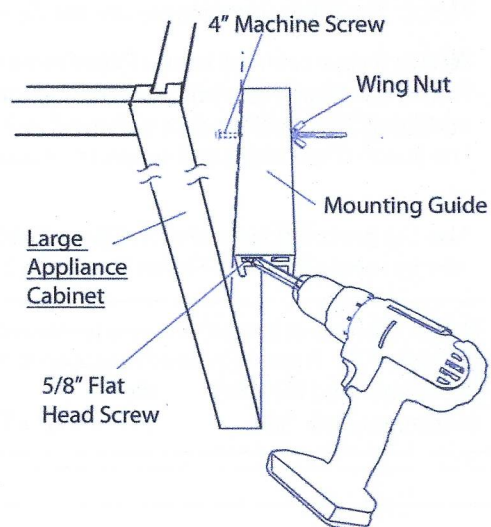
6.

In order to keep the Mounting Guide aligned for the next step, temporarily insert a 4" Machine Screw through both the inside of the Cabinet Box and through the 4th side holes of the Mounting Guide.

Screw the Wingnut onto Machine Screw and hand tighten.

7.

While keeping the Top Edge of the Mounting Guide level along the Marked Line, screw a provided 5/8" Flat Head Screw through the 1st front angled hole to secure front side of the Mounting Guide to the cabinet.



8.

Unscrew Wingnut and remove 4" Machine Screw in order to install 2nd cabinet (or end panel).

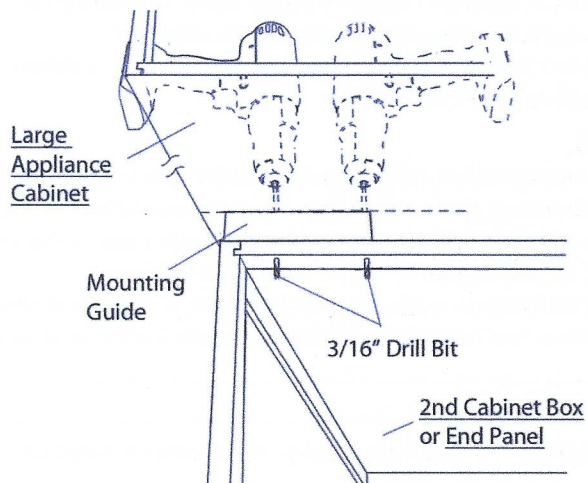
9.

Install, level, and secure 2nd cabinet flush against adjacent side of Mounting Guide, making sure of a consistent 1 1/2" parallel vertical space between the two cabinets face frames.

Make sure of a parallel horizontal space between the two cabinets as well.

10.

While securing the Mounting Guide, re-insert the 3/16" Drill Bit into the same 2nd and then 4th hole and drill both through the 2nd Cabinet/Endpanel.

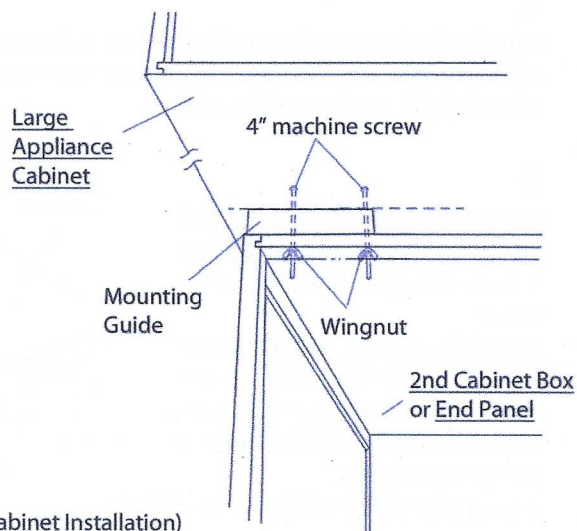


11.

Insert the 4" Machine Screw again through the 4th hole, all the way through the Large Appliance Cabinet, Mounting Guide and 2nd Cabinet/Endpanel.

Again, use the provided Wingnut and screw it onto the 4" Machine Screw and tighten with moderate force (do not over-tighten).

Follow the same procedure using the other 4" Machine Screw and Wingnut through the 2nd hole.



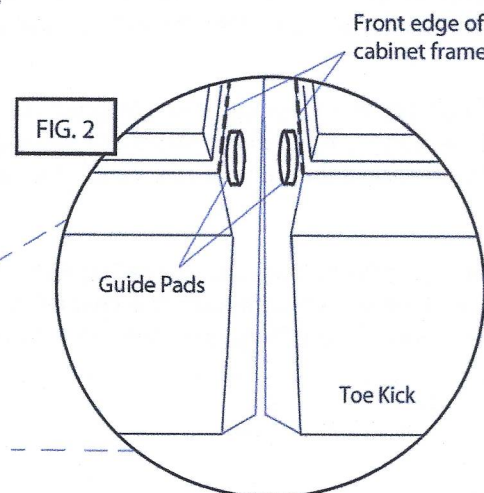
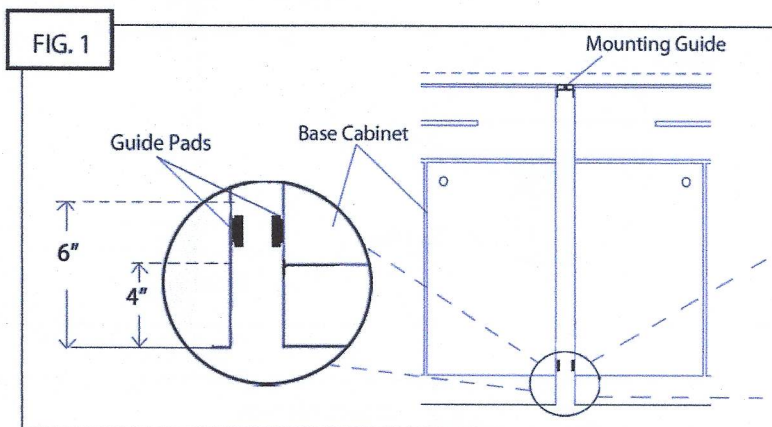
Continue to pg. 7 (Installing Guide Pads for Large Cabinet to Base Cabinet Installation)

Installing Guide Pads -

Choose **ONE** of the follow descriptions that best fits your installation

For Base Cabinet to Base Cabinet/End Panel Installation

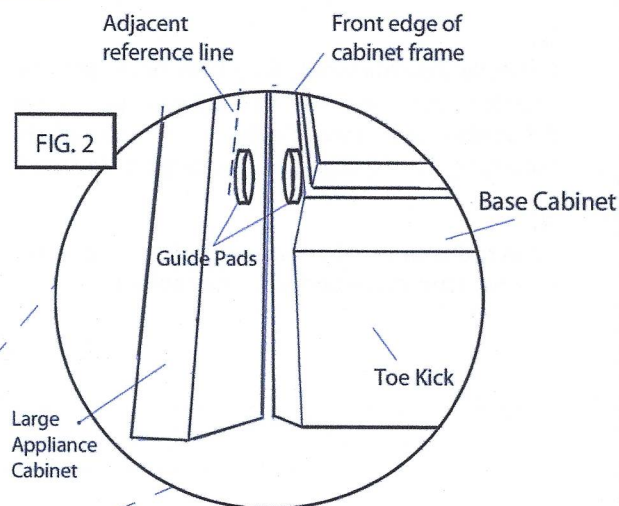
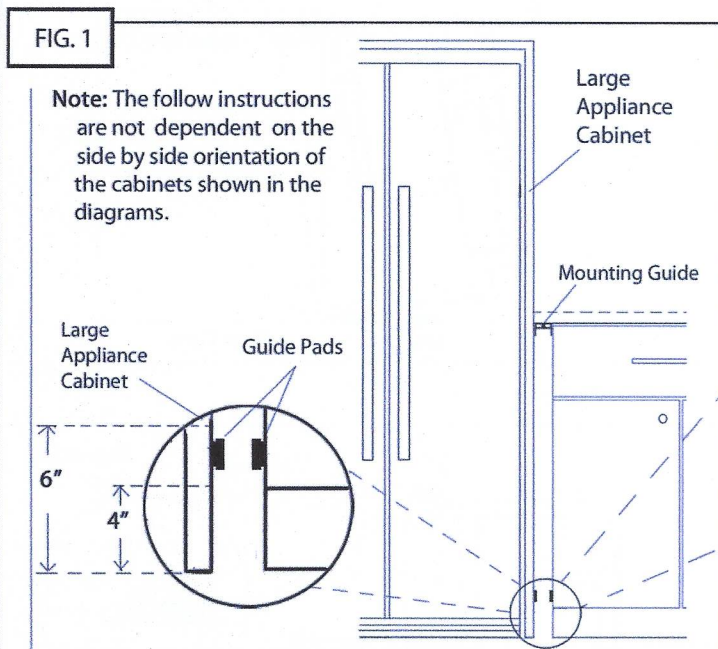
or for two cabinets with same depth



1. Locate the area where the guide pads will be installed (Step 2 and 3) and wipe down the area so it's clean and dry.
2. The Guide pads are mounted in the range of 4" - 6" above the finished floor. The Guide Pads are mounted on the side surface of the Cabinet. See (FIG. 1)
3. Position the Guide Pads, so that the Guide Pads are flush with but do not protrude past the front edge of the cabinet frame. See (FIG. 2)
4. Remove the paper back of the sticky end of the Guide pads and attach to the side of each Cabinet/Endpanel. Press firmly.

For Large Appliance Cabinet to Base Cabinet Installation

or for two cabinets with different depths



1. Locate the area where the guide pads will be installed (Steps 2 - 4) and wipe down the area so it's clean and dry.
2. The Guide pads are mounted in the range of 4" - 6" above the finished floor on the side surface of the Cabinet. See (FIG. 1)
3. Position the Guide Pads so that the initial Guide Pad on base cabinet is flush with but does not protrude past the front edge of the cabinet frame. See (FIG. 2)
4. Position the 2nd Guide Pad so that it does not protrude past the initial Guide Pad. See (FIG. 2)
5. Remove the paper back of the sticky end of the Guide pads and attach to the side of each Cabinet. Press firmly.

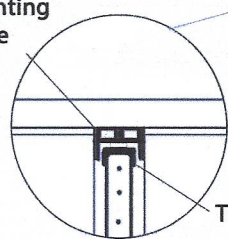
Installing/Removing Step 180:

Important: Test the sliding action of the Step Unit: make sure there are no problems with the installation of the mounting guide before countertops are installed.

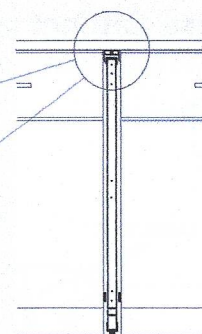
Caution: The Step Unit uses a Magnetic Latch. When lifting or handling, extra care is needed to prevent unintentional release of the steps.

Note: In the following steps the Top Rail of the Step Unit will slide through the channel of the Mounting Guide (Diagram showing front view).

Mounting Guide



Top Rail



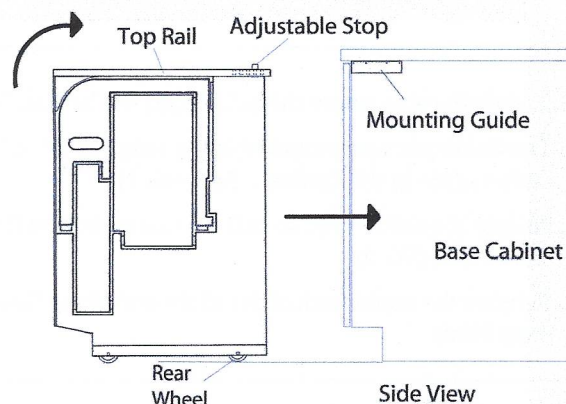
Front View

1.

Carefully position the Step Unit in front of the cabinet opening, aligned to slide into the opening.

2.

Pivot the step unit back onto its Rear Wheel so the rear of the Step Unit lowers the Adjustable Stop enough to clear the lower portion of the Mounting Guide.



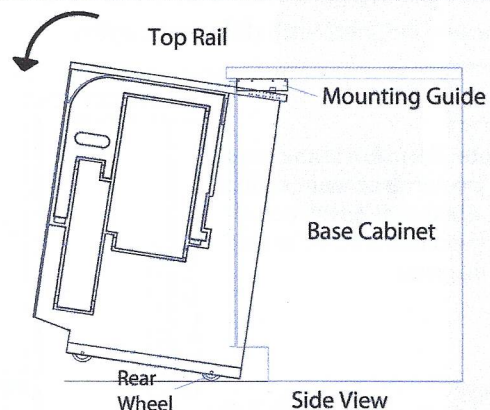
Side View

3.

Carefully slide the whole Step Unit back until the Top Rail slides into the Mounting Guide and the Adjustable Stop travels past the bottom of the Mounting Guide Block. (See diagram in Step 5)

4.

Pivot the Step Unit back down and guide the Step Unit into the space between the cabinets.

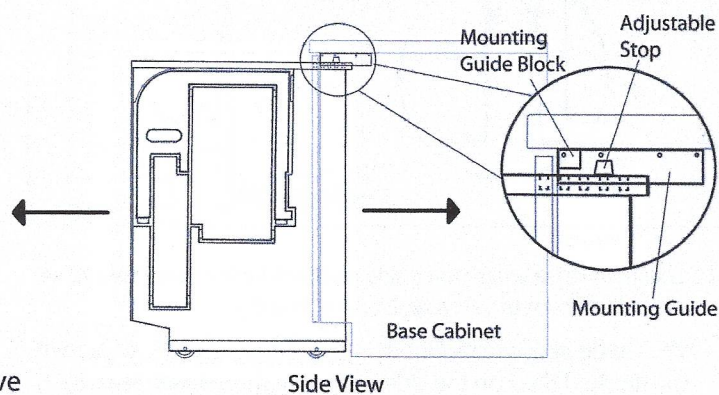


Side View

5.

Once both wheels are on the ground, with the Adjustable Stop positioned behind the Mounting Guide, the Step Unit can be moved back and forth within the space between the cabinets

Note: Adjustable Stop **MUST** be behind the Mounting Guide Block for correct installation and before use of the Step Unit.



Side View

Removal: Reversal of the directions (Steps 1-5) above

Installing the Face panel: (not included)

Note: Face Panel strip should be cut-to-size and at least 1 1/4" wide. The general height should extend from the top of the toe kick up to the countertop, same as the adjacent cabinet face panels.

1.

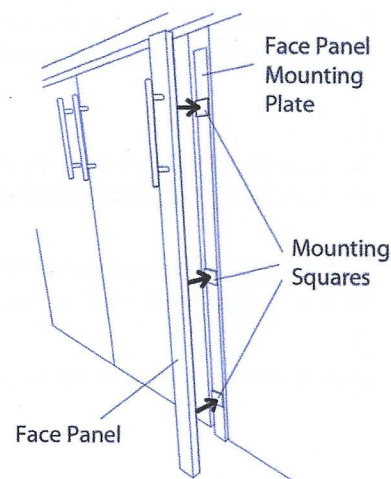
Measure location for attaching cabinet handle/knob (not included) to the face panel in correspondence to the nearby cabinetry. Countersinking handle/knob screw(s) is recommended

2.

On the front of the Face Panel Mounting Plate, peel paper backs off the top and bottom sticky Mounting Squares. The middle Mounting Square paper can remain unused, in case a second attempt is needed.

3.

Align the face panel in the desired location and press face panel onto the Face Panel Mounting Plate, sticking the two together.



4.

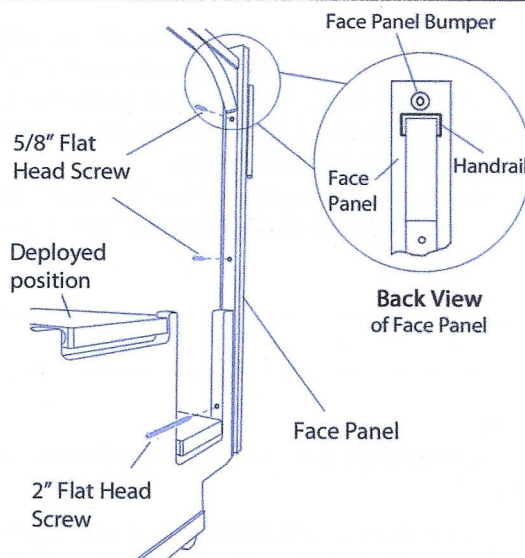
With the Step unit in the deployed position, secure the Face Panel to the Mounting Plate using the holes in the back side of the Mounting Plate with the following screws:

- Pre-drill holes if necessary.
- One 5/8" Flat Head Screw for the top hole.
- One 5/8" Flat Head Screw for the middle hole.
- One 2" Flat Head Screw for the bottom hole.

Note: Angled access to the 2" Screw is easier with a "long" phillips head bit or screwdriver, for the bottom hole.

5.

An (optional) Face Panel Bumper is provided. Attach the Bumper on the top portion of the back side of the Step Unit's Face Panel. Align so that when in the closed position, the Bumper contacts the front flat portion of the Mounting Guide.



Adjustments: 1/2" fore and aft range of adjustment of the Handrail allows for the Step Unit Face Panel to align vertically with the adjacent cabinet face panels:

1.

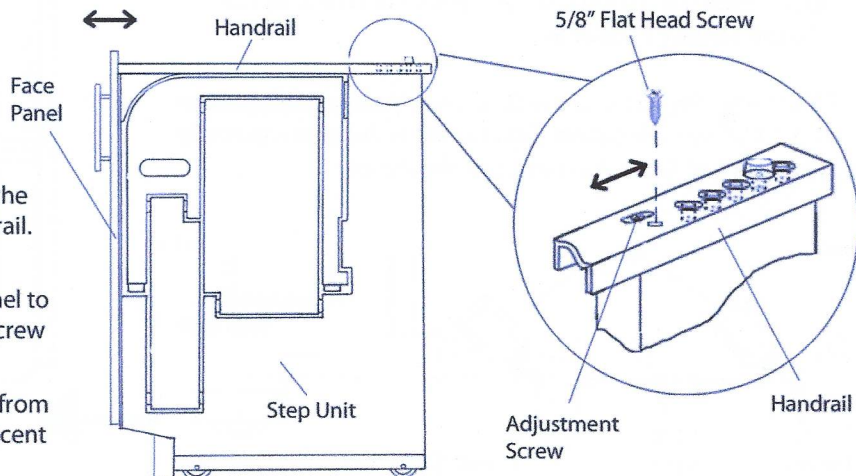
Loosen the Adjustment Screw located in the elongated hole on the top side of the Handrail.

2.

Move Handrail fore or aft to align the Face Panel to adjacent cabinet face panels and retighten screw

3.

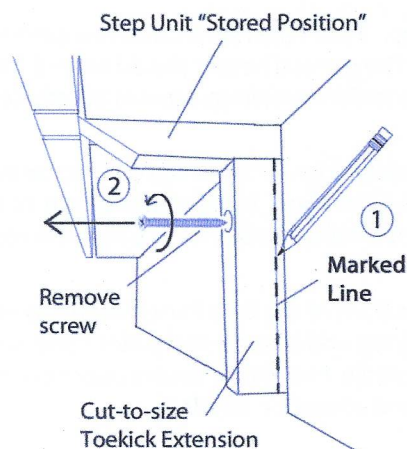
Use a 5/8" long screw to secure the Handrail from moving by screwing into the screw hole adjacent to the elongated adjustment hole.



Installing the Toekick: (not included)

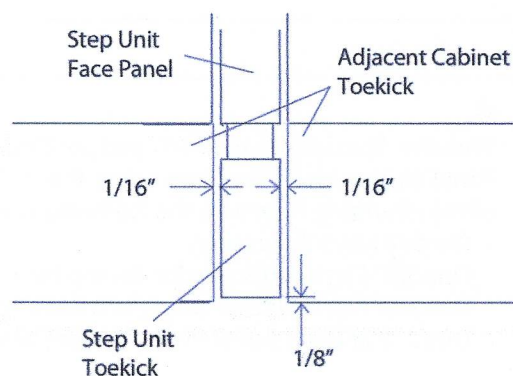
Note: The follow instructions are meant to be followed before Toekick Material is installed on adjacent cabinetry.

1. Slide the Step Unit into the fully Stored Position. The Toekick Extension has been designed to be cut-to-size.
2. Mark a line flush along where the backside of the Toekick would be on the Toekick Extension using the adjacent cabinet as a guide.
3. Use this measurement to cut the Kickplate Extension to size.



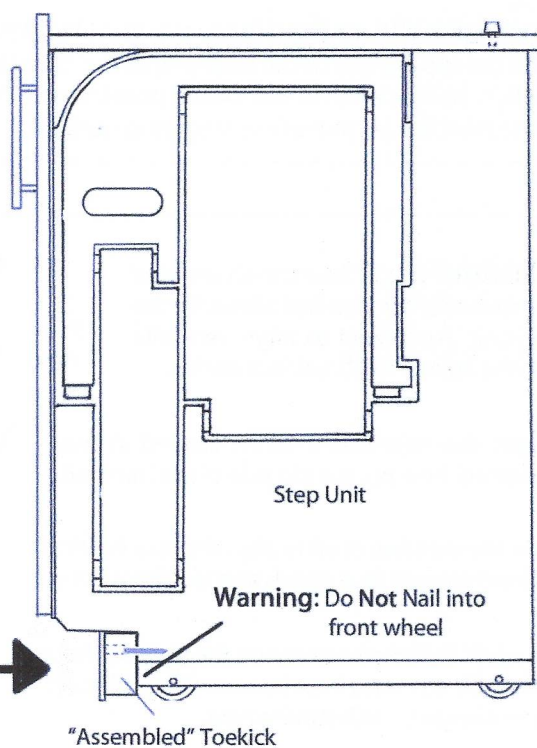
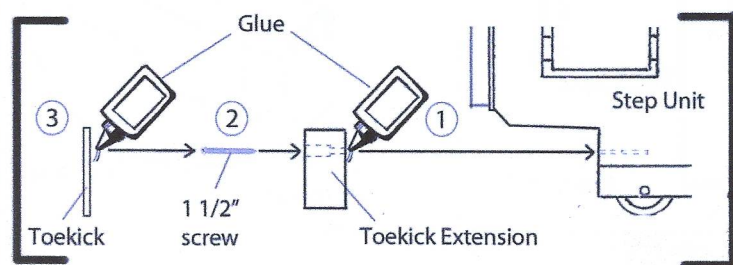
Guidelines:

- Use the same Toekick material as the Adjacent Cabinet Toekicks.
- Recommended minimum clearance of 1/16" between either side of the Step Unit's Toekick and the Adjacent Cabinet Toekicks.
- Recommended minimum clearance of 1/8" between the bottom of the Toekick and the floor.
- Beveling the backsides of the Step Unit's Toekick can help avoid any binding with the Adjacent Cabinet Toekicks.



4. Glue and align the back side of the Toekick Extension.
5. Re-attach the Toekick Extension to the Step Unit using the provided 1 1/2" screw. Do not over tighten.
6. Cut out the Step Unit's Toekick following the guidelines above. Glue the backside of the Toekick and tape or nail it to the Toekick Extension.

Warning: Be aware of the Step Unit's front wheel location and 1 1/2" screw location. Do not nail in this area especially when Toekick Extension has been shortened.

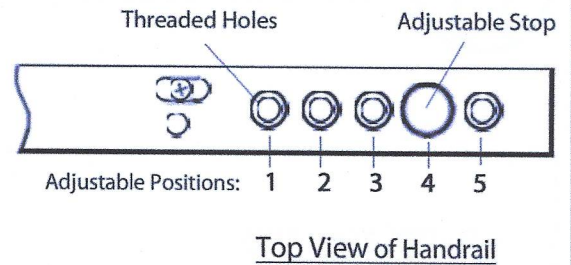


Adjusting the Depth of Step Unit:

Adjustable Positions (Distance is measured from front of cabinet face frame to back of Step Unit):

Position	Clearance Example for each Position	Distance
1	Allows clearance for cabinet doors only	1 1/4"
2	Cabinet doors + shallow handle/knobs	2"
3	Cabinet doors + Large handle/knobs	2" 3/4"
4 or 5	Cabinet-depth appliance w/ handles*	3 1/2"
5 or 4	Counter-depth appliance w/no impeding handles*	4 1/4"

* Depending on appliance door design, the handle size and placement may impede the step unit. Measure before installing. Will not fit all applications.



Note: The Step Unit has 5 Adjustable Positions to allow the back of the Step Unit to clear different cabinet handle/knob and appliance applications. The range of depth is measured from the front of the Cabinet Face Frame to the rear of the Step Unit's back leg.

Note: Always choose the depth position so that when the Step Unit is deployed, the Top Step is the closest distance to the cabinet, cabinet pull knob/handle or appliance without interfering with them.

1.

If adjustment to the depth of the Step Unit is needed, remove the Step Unit from the cabinet (See Installing/Removing Step Unit, Page 8).

2.

Determine the desired Depth Position from the table above.

3.

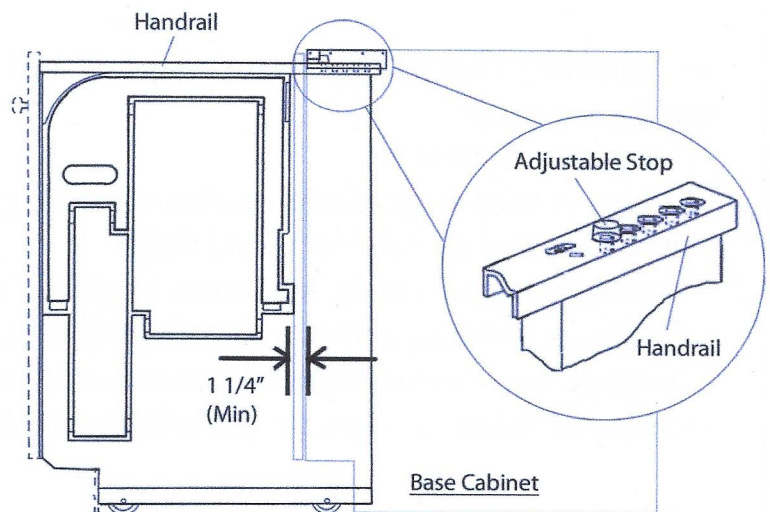
The Adjustable Stop is located on the top back side of the Step Unit's Handrail. Remove Adjustable Stop by unscrewing by hand (counter-clockwise).

4.

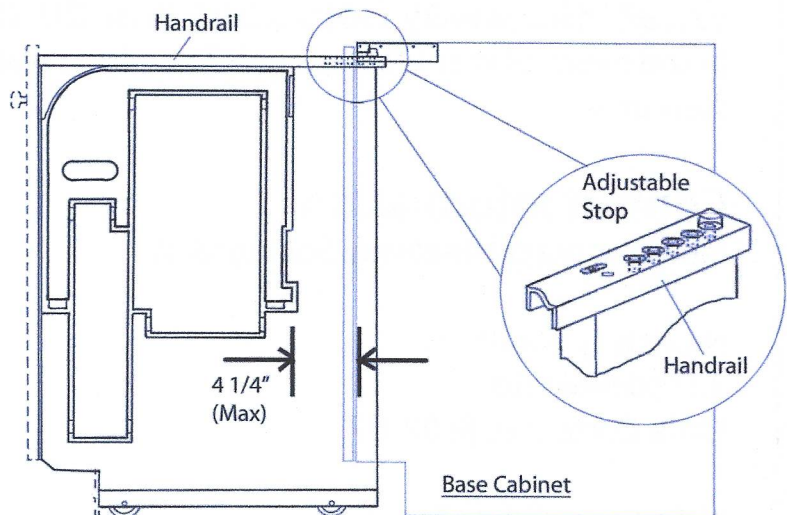
Move Adjustable Stop to new location by screwing Adjustable Stop (clockwise) into Threaded Hole. Tighten firmly by hand.

5.

Reinstall Step Unit (See Installing/Removing Step Unit). Adjust as necessary by repeating the steps above.



Minimum Adjustable Depth shown



Maximum Adjustable Depth shown



WARRANTY

for STEP 180 integrated cabinet step units

Limited Warranty
STEP 180 Step Unit

What the warranty covers

Our limited warranty guarantees our products to be free from defects in material and craftsmanship. Any concerns with the Step 180 should be addressed immediately.

What the warranty does not cover

We do not cover

- Damage in Transit
- Failure to follow installation guide correctly (included with Step Unit)
- Wear and tear on original wood finish
- Inadequate care, abuse, misuse or abnormal use
- Accidents not due to the product's proper use
- Damage due to environmental or natural elements (flood or fire, etc.)
- Failure to follow user guide (included with Step Unit)

What the time of coverage is

The limited warranty is covered one year from date of purchase

What Hideaway Solutions will do to correct problems

In the event of manufacturing defects, Hideaway Solutions will repair or replace the step unit

Contact information

Please contact Hideaway Solutions at:

Hideaway Solutions
23 Old Main Rd
Little Compton, RI 02837

hideawaysolutions.com
401-835-7599