

HIDEAWAY SOLUTIONS

STEP 180

Hideaway Solutions is a new company driven by the common need to access all areas of a home. **Step 180** is an integrated cabinet step unit. The product is designed to provide quick and easy accessibility for hard to reach upper cabinets and shelves as well as allowing children more opportunities to thrive in the kitchen. With **Step 180** children can safely use kitchen and bathroom sinks and countertops with ease. The integrated step unit delivers safe, convenient and fast access where you need it most.

Features:

- Quick and easy to use - unfolds in seconds
- Space saving design - only 1 1/2" width between cabinets
- Integrated stable design - safe and attractive
- Useful 2-way deployment - 6 ft. reachable span
- Time saving design - there when you need it in seconds
- Quickly access up to 50% more upper cabinet space
- Ergonomic and convenient to use
- Adj. depth for use in front of cabinet-depth appliances
- Spring assistance
- Integrated child-lock

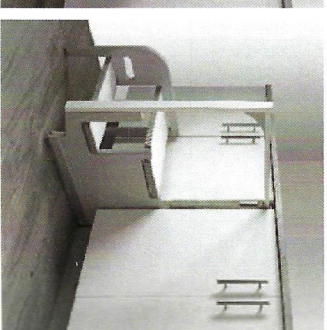
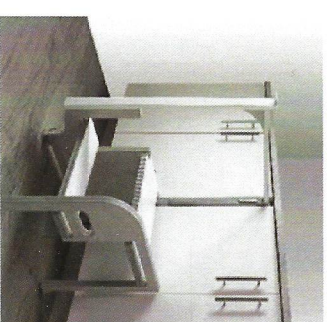
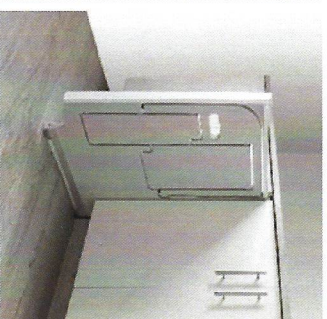
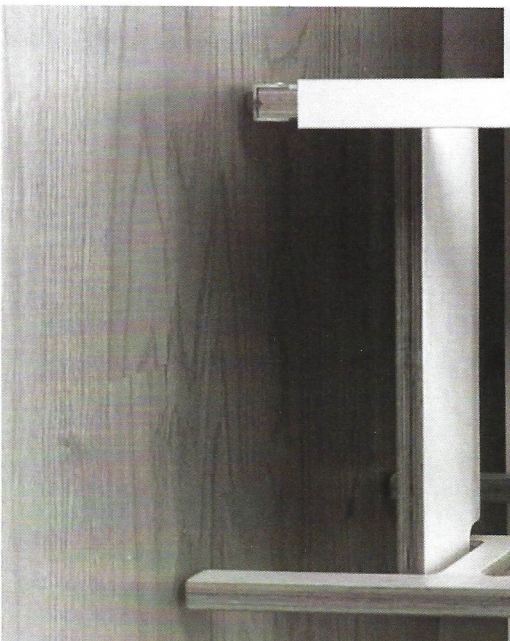


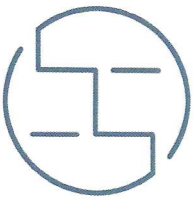
↑ Easily regain use of hard to reach places - tall cabinets and above cabinet depth appliances.



Deploys in seconds
&
Stores in seconds

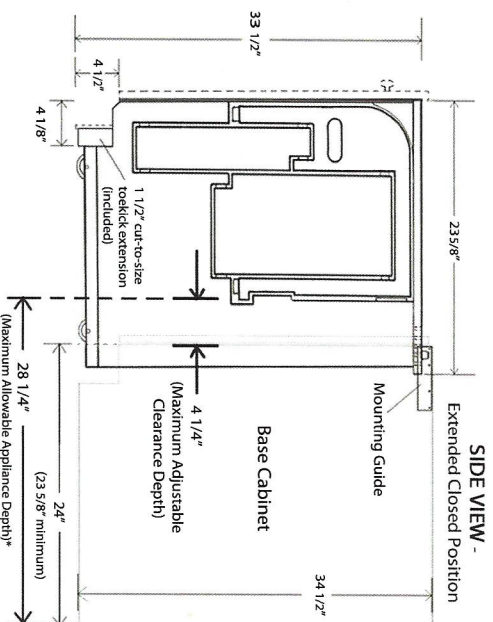
→ Quick solution for children to easily use countertops and sinks.





HIDEAWAY SOLUTIONS, LLC
www.hideawaysolutions.com
(401) 835-7599

STEP 180 - SPECIFICATIONS



Required Cabinet Dimensions for Installing in Standard (Kitchen) Cabinets:

Width (between cabinets) _____ 1 1/2"
Height (Minimum) _____ 34 1/2"
Depth (Minimum) _____ 23 5/8"

Unit Dimensions in Closed Position (without Mounting Guide):

Width _____ 1 1/4"
Height _____ 33 1/2"
Depth _____ 23 5/8"

Unit Dimensions in Deployed Left or Right Position:

Width (from center of step unit) _____ 16 1/4"
Height (top step) _____ 15 1/4"
Usable Step Width _____ 14 1/2"

Step Units Deployed Clearances:

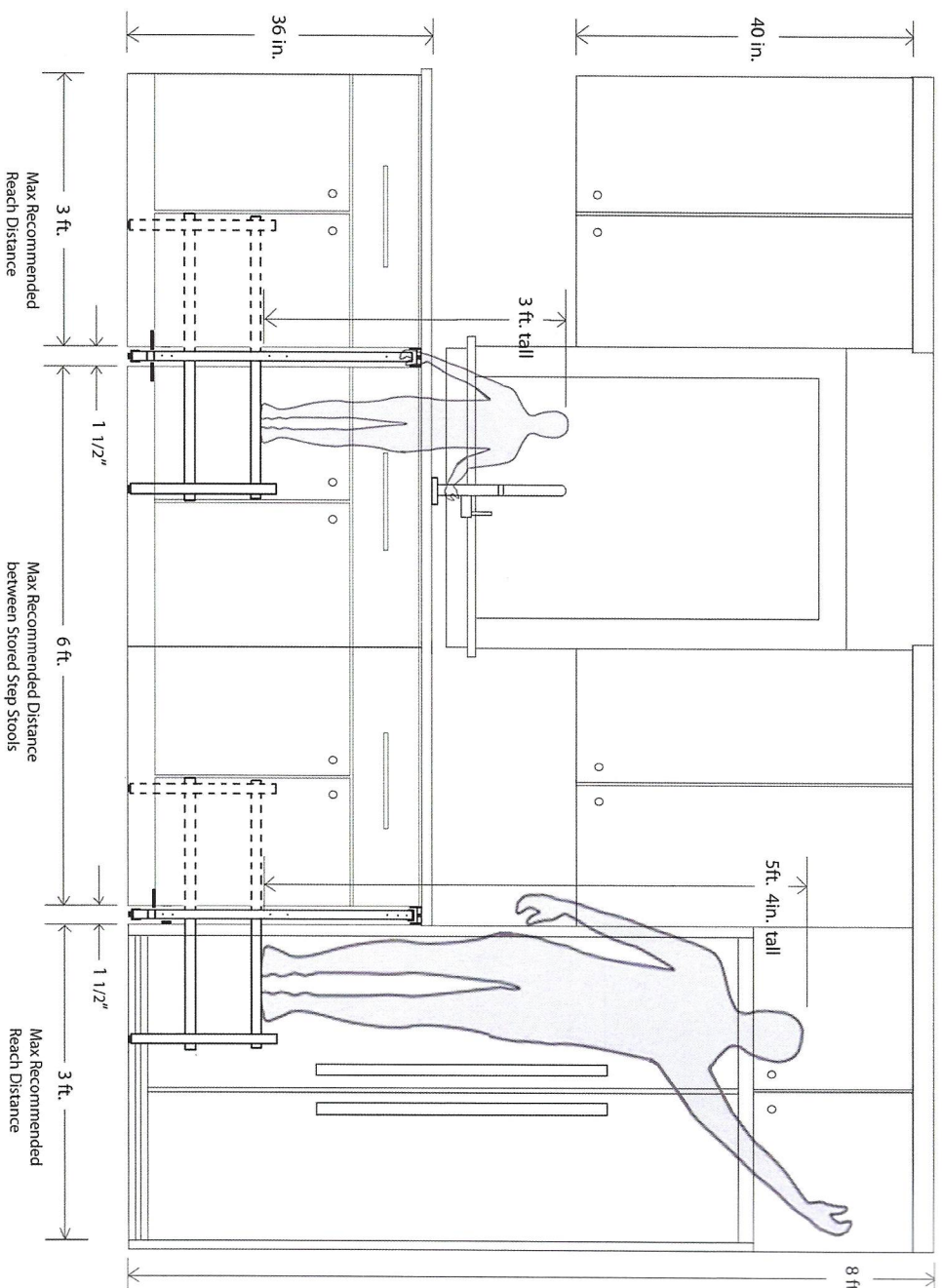
Adjustable Clearance Depth (from front of cabinet box (excluding doors), to backside of step unit's rear leg) _____ 1 1/4" to 4 1/4"

*Maximum Allowable Appliance Depth (measurement based on 24" deep base cabinet box (excluding doors)) _____ 28 1/4"

Weight (step unit) _____ 20.5 lbs
Weight Limit (duty rating) _____ 200 lbs

Does not include toe kick, face panel, pull handle or cabinets

Patent pending



Step 180 was designed with the customer's varied needs in mind.

- The adjustable depth allows the step unit to operate in front of a cabinet depth appliance. With ease, customers can access the spaces above large kitchen appliances, like fridges, wall ovens and dishwashers.
- Once the step unit is deployed, the railing contributes added stability.
- Spring assistance makes for virtually effortless usability.
- The child-lock feature prevents unsupervised use by young children.

