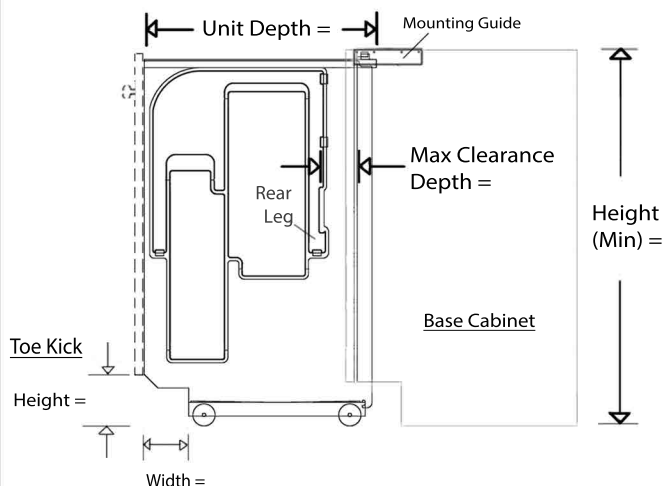
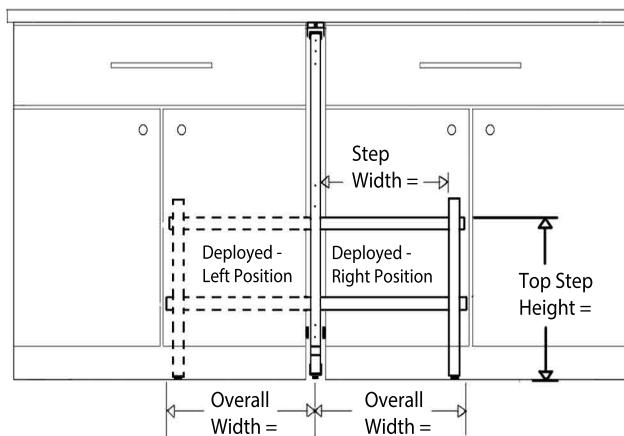


STEP 180 PLUS - SPECIFICATIONS

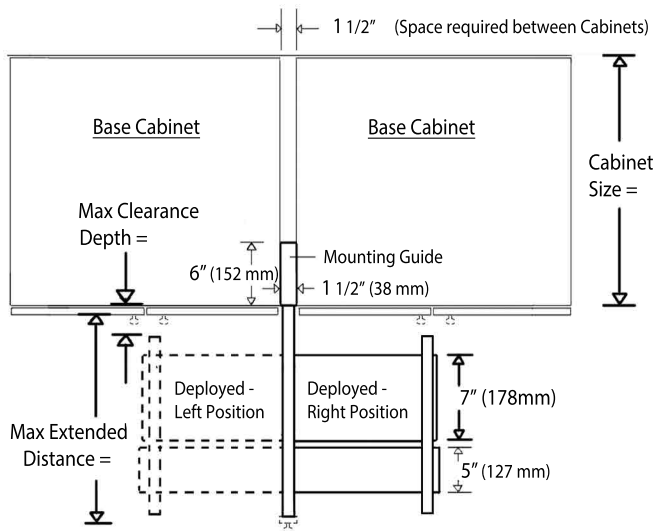
SIDE VIEW - Extended Closed Position



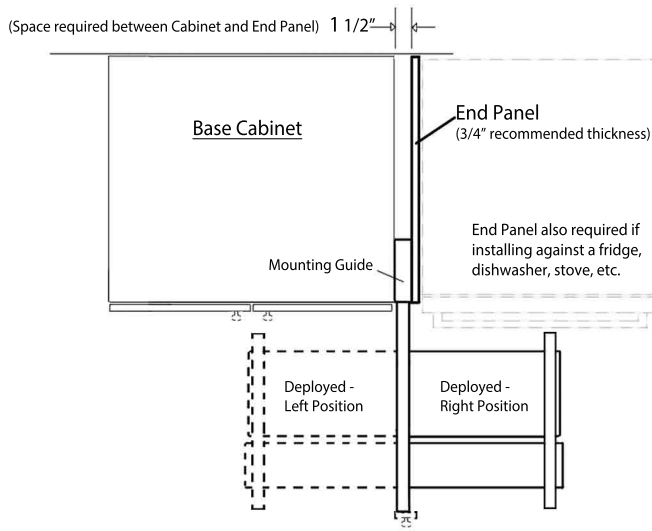
FRONT VIEW - Extended And Deployed Positions



TOP VIEW - Mounted Between Base Cabinet & 2nd Base Cabinet



TOP VIEW - Mounted Between Base Cabinet & End Panel



STEP 180 PLUS

Cabinet Size (Depth)

(Generally Designed For):

Cabinet Space requirements:

Width (between cabinets) _____

Height (Minimum) _____

Unit Depth _____

Step Units Deployed Clearances:

Max Clearance Depth (From Cabinet Frame)

Max Extended Distance (From Cabinet)

Overall Width (From Center Of Unit)

Step Width (Usable) _____

Top Step Depth _____

Top Step Height _____

Toe Kick (Height
x Depth)

Weight (Step Unit) _____

Weight Limit (Duty Rating) _____

Country of Origin _____

34" (860 mm) tall models

21" (US Bath & Intl Kitchens)	22" (Australian & Intl Kitchens)	23" (US Kitchen "Full-inset")	24" (US Kitchen "Frameless/ Full Overlay")	27" (Fridge Depth Cabinet "Max Clearance")
1 1/2" (38 mm)				
33 7/8" (860 mm) or (34 1/2" (875 mm) w/ Touch-to-Open option)				
20 7/8" (530 mm)	21 3/4" (553 mm)	23" (584 mm)	23 5/8" (600 mm)	26 7/8" (683 mm)
2 1/4" (57 mm)	3 1/2" (89 mm)	4 1/2" (114 mm)	5 1/8" (130 mm)	7 5/8" (194 mm)
18 1/2" (470 mm)	19 7/8" (505 mm)	20 7/8" (530 mm)	21 1/2" (546 mm)	24" (610 mm)
16" (406 mm)				
14 1/4" (362 mm)				
7" (178 mm)				
14 1/2" (368 mm)				
4 3/4" (120 mm) x 3 3/8" (86 mm)	5 3/4" (146 mm) x 2 1/2" (64 mm)	4 3/4" (120 mm) x 4" (102 mm)	4 3/4" (120 mm) x 4" (102 mm)	4 3/4" (120 mm) x 4" (102 mm)
16 lbs (7.3 kg)	17 lbs (7.7 kg)	19 lbs (8.6 kg)	19 lbs (8.6 kg)	22 lbs (10 kg)
200 lbs (90.7 kg)				

32" (813 mm) tall models

21" (US Bath & Intl Kitchens)	23" (ADA Kitchen "Full-inset")	24" (ADA Kitchen "Frameless/ Full Overlay")
1 1/2" (38 mm)		
32" (813 mm) or (32 5/8" (828 mm) w/ Touch-to-Open)		
20 7/8" (530 mm)	23" (584 mm)	23 5/8" (600 mm)
2 1/4" (57 mm)	4 1/2" (114 mm)	5 1/8" (130 mm)
18 1/2" (470 mm)	20 7/8" (530 mm)	21 1/2" (546 mm)
15" (381 mm)		
13 1/4" (337 mm)		
7" (178 mm)		
13 3/4" (349 mm)		
4 3/4" (120 mm) x 3 3/8" (86 mm)	4 3/4" (120 mm) x 4" (102 mm)	4 3/4" (120 mm) x 4" (102 mm)
15 lbs (6.8 kg)	17 lbs (7.7 kg)	18 lbs (8.2 kg)
200 lbs (90.7 kg)		

Designed and Manufactured in the USA

Does Not Include Toe Kick, Face Panel, Pull Handle Or Cabinets

Patented Product